



ANSES

**French Agency for Food, Environmental and Occupational
Health & Safety**

**feedback on the usefulness of ACROPOLIS
models and training in relation to the
international needs and developments**

Relations with the government and Parliament

Ministry for **ecology** and **sustainable development**

Ministry for **labour**

Ministry for **health**

Ministry for **food, agriculture and fisheries**

Ministry for **consumer affairs**

5 supervisory ministries
State Goals & Resources
Contract

Vote of the annual grant,
annual report

anses
French agency for food, environmental
and occupational health & safety



Parliament

Involvement in several national plans:
environmental health (PNSE), occupational health (PNST), Ecophyto 2018, nutrition (PNNS), Cancer Plan, Drug residues in water plan, Chlordecone Action Plan, Heat wave measures, etc.

Missions

ANSES contributes to ensuring:

- **human health and safety** in the fields of **environment, work and food**

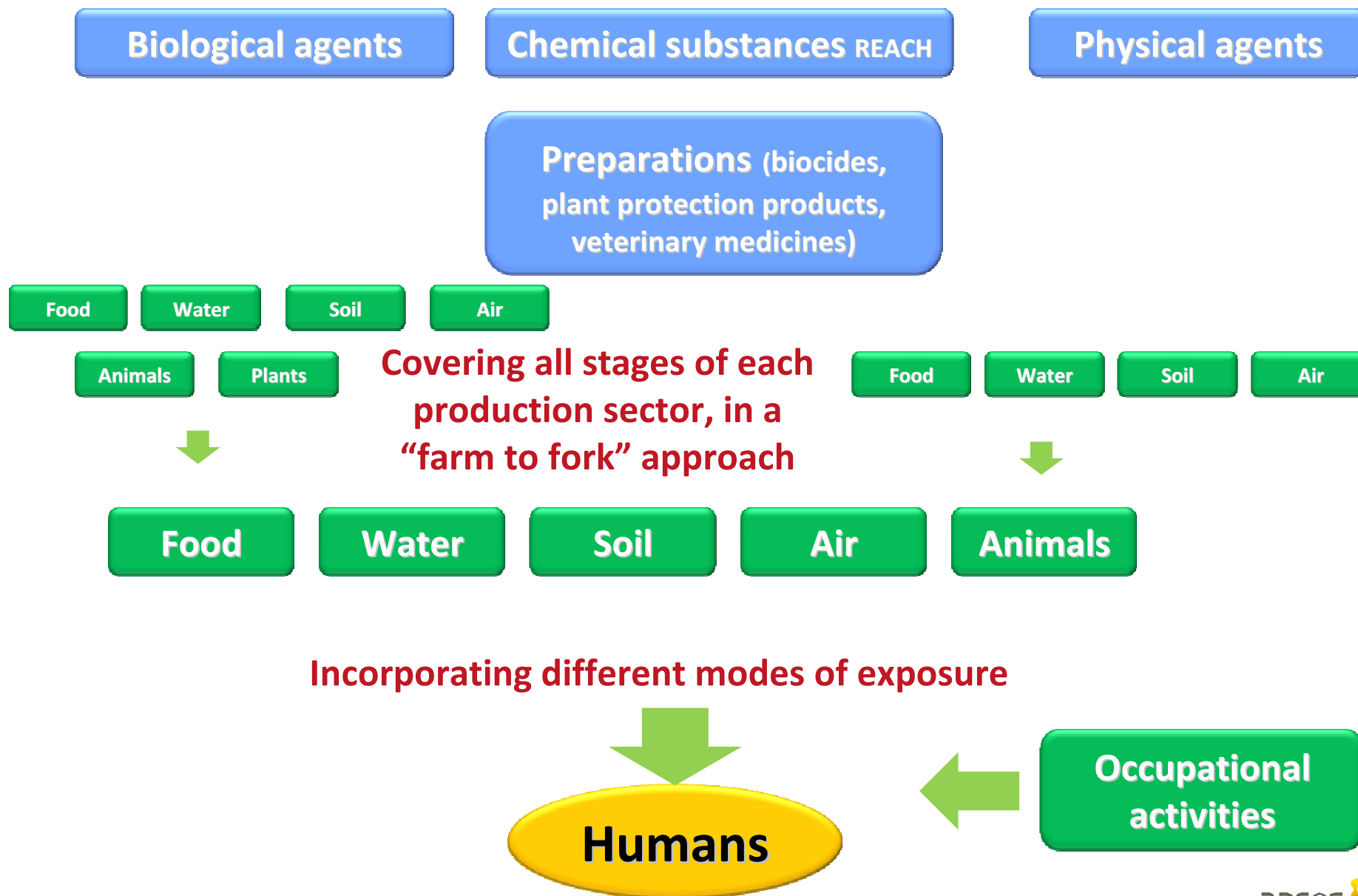


As well as:

- protecting **animal health and welfare**
- protecting **plant health**



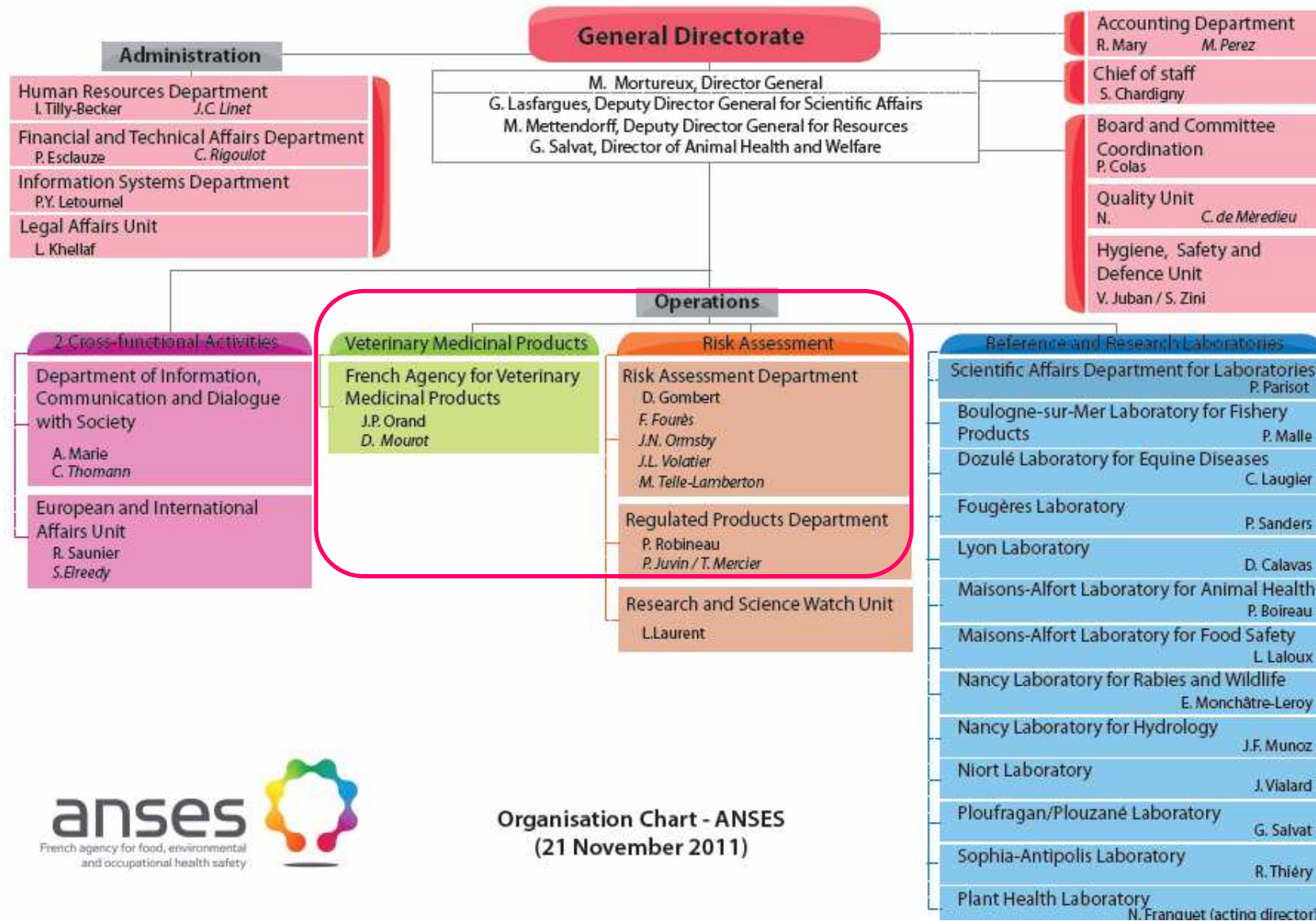
Broad and all-embracing competences



Monitoring and vigilance

- ✓ Organises **vigilance** systems
- ✓ Manages, coordinates and participates in **epidemiological surveillance networks**
- ✓ Sets up **observatories** for products and processes
- ✓ Creates or helps create scientific and technical **databases** in its fields of competence
- ✓ **Informed by the ministries regarding health inspection and surveillance programmes**, it provides them with access upon request to the results of inspections and checks which revealed risks
- ✓ “**On request**, and while maintaining the confidentiality of data with regards to third parties, **may gains access to all the information for its missions** that is held by any natural or legal person, notwithstanding any objections on grounds of medical, professional, industrial or commercial confidentiality.”
- ✓ Participates actively in European and international **alert networks**
- ✓ Maintains an **international science watch**
- ✓ Maintains a watch on trends in the **media and society**

Organisation chart



Post Registration activities

- ✓ Risk Assessment Department (RAD) organises studies on population exposure via foods (studies on total food exposure = TDS) to contaminants, and pesticides residues.
- ✓ Then RAD has a clear interest in comparing its own methodologies to the best ones in order to improve the French vigilance system.

Pre Registration activities

- ✓ **Regulated Product Department (RPD) is in charge of risk assessment of active substances before registration (mainly for pesticides and biocides).**
- ✓ **Then RPD has a clear interest in being involved in methodologies under development that could be used in a “legal context” of consumer risk assessment.**

Pre and Post Registration activities

Probabilistic methods proposed by Acropolis allow to take into account at the same time

- ✓ **the food contamination variability**
- ✓ **the different consumption habits in the general population**

Pre and Post Registration activities

MCRA tool allows to estimate in a simple and “user friendly” way the exposure to pesticides of different groups of consumers :

- ✓ In a standardised European way,
- ✓ then it will be easier to compare the results (if residues and consumption data are of the same nature among MSs)

Pre and Post Registration activities

Acropolis is developing methodologies to assess aggregative exposure to pesticides :

- ✓ for specific populations: workers in agriculture are also consumers
- ✓ for different way of exposure: some pesticides used in agriculture are also veterinary medicines and/or biocides

Pre and Post Registration activities

Acropolis develops methodologies to assess cumulative exposure to pesticides :

- ✓ for specific “groups” of pesticides
- ✓ for different foods

Pre and Post Registration activities

Need of standardization of the data considered by this tool:

- ✓ **way to collect and interpret collected data (consumption and contamination)**
- ✓ **way of using the tool**

- ✓ **=> coordination by EFSA**

Pre Registration activities

Need of this kind of tool for assessment of risk linked to cumulative exposure, when risk is not clearly linked to a single a.s., but to a group of a.s. or metabolites but need to define:

- ✓ Group considered on what basis?
- ✓ Toxicological Reference Values to consider (ratio of ADI/ARfD ratio of BMD, “new” ones)?
- ✓ Other data needed (percentage of treated crops, etc.)?

=> evaluation coordinated by EFSA of those aspects

Pre Registration activities

Need of defining the limits of the tool in the frame of MRL setting:

- ✓ **Do the risk manager need to consider probabilistic approach in the frame of MRL setting process for a single a.s. ? (# from risk linked to micro-organisms, few data available, criteria for decision, etc.)**

=> Under which conditions probabilistic approach remains as protective for consumer as deterministic one?

=> evaluation by EFSA of those aspects

conclusion

- **A good way to harmonize the probabilistic approach of risk linked to chemicals at EU level**
- **Anses intend to participate, at least by providing FR data**
- **Need of coordination/harmonization in the way of data collection (consumption)**
- **EFSA should be involved in standardization, defining limits of the tool, rules definition in the different potential frames of use of this tool in order to grant an increase of consumer safety.**

Thank you for your attention

www.anses.fr